



# GRIFFIN CHRONICLE

## UPCOMING EVENTS

### FEBRUARY 1-14

Box Tops Collection Drive

### FEBRUARY 3

Girls Basketball Game 4:30 p.m. (Home)

### FEBRUARY 5

Girls Basketball Game 4:30 p.m. (Home)

### FEBRUARY 10-14

Teacher Supply Drive PTO

### FEBRUARY 11

Principal's Pride

### FEBRUARY 12

Girls Basketball Game 4:30 p.m.  
(Away— Draper American Prep. Academy)

### FEBRUARY 14

Valentine's Day Class Parties 12:40 p.m.



## MESSAGE FROM THE DIRECTOR

Recreation, Volunteerism, and Entrepreneurship.

**STAND** represents the role of the family as a partner in education. The letters in STAND represent each family's commitment to being Supportive, Teacher Partners, Active, Navigators, and Dedicated.

**LEAD** represents the role of the educator in our students' success. The letters in LEAD represent staff who are lifelong learners, believe every student matters, are driven by actions and outcomes, and makes decisions based on data.

Dear Athlos families,  
We are excited to introduce new role statements to our school community that outline how our school supports our students in pursuit of a high-quality education, and our expectations of parents and educators in supporting student success.

This week, we sent home an email to families introducing three acronyms: **SERVE**, **STAND**, and **LEAD**.

**SERVE** represents our dedication, as a school community, in preparing students with a high-quality education. The letters of the acronym represent a focus on Science, Engineering,

CONTINUED ON PAGE 2 ►

## IN THIS EDITION

**PAGE 1** Message from the Director

**PAGE 4** Valentine's Day Class Parties & Teacher Requests

**PAGE 2** Staff Spotlight & Big Budah

**PAGE 5** Feb. Cafeteria Menu & Lunch Account Reminder

**PAGE** Box Top Drive & Teacher Supply Drive

**PAGE 6** Field Trips & PTO Announcements

CONTINUED ▶

We hope you will embrace these ideas as new ways to think about supporting our students in their educational journey. Check your email for more details shared this week and keep an eye out as we introduce these more over the coming weeks!

Sincerely,  
Mandy Kartchner

---



## Staff Spotlight

**ZACHARY JOHNSTONE**

SPECIAL EDUCATION TEACHER

Hello Griffins,

My name is Zachary Johnstone, and I am a special education teacher at Athlos. It is my first year teaching, and I love all the students I get to interact with. I love sports and spending time outdoors with my family. I love teaching here at Athlos because the students are great and eager to learn,

and the staff here is great and want to see the students succeed. My favorite performance trait is grit. I think to be able to show grit will help students overcome any challenges that may come their way.

---

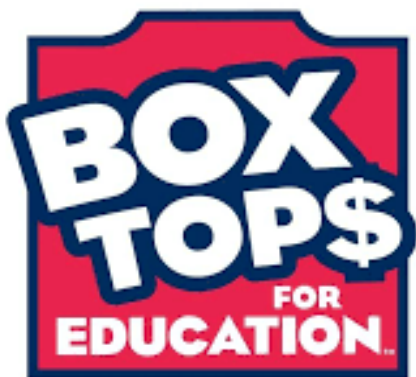
## Big Budah Athlos Highlight

We are excited to announce that Big Budah, a features reporter for Fox 13's Good Day Utah, will be visiting our school on February 5. He will be highlighting Athlos Academy, our three pillars, and what makes our school unique. Look out for Big Budah's highlight in the next Griffin Chronicle.



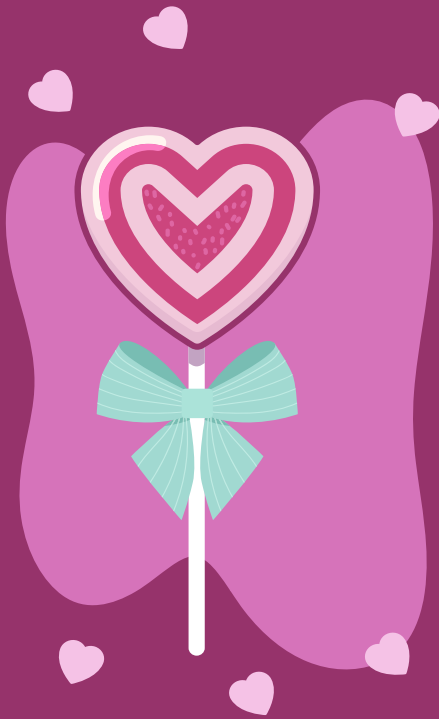
# Teacher Supply Drive

Teachers will be sending out supply needs they have the week of February 3. Look for an email or paper with a list with those needs. Show your teacher some love by sending needed supplies in with your student by February 14. Don't forget your athletic coaches, music teacher, and special education teachers! Our goal is to replenish supplies they have run out of or need for the last half of the school year. Thank you for supporting our teachers, they deserve some love!



## Box Tops Collection

BoxTops will be collected from February 1 through 14. Each student is encouraged to donate 30 BoxTops or \$3 (or a combination adding up to \$3 worth). Each school day during the drive, prizes will be drawn for participating students. Every 10 BoxTops or \$1 equals one entry into the drawing. If our goal of \$800 worth of BoxTops is collected, the students will earn a dress down day. The top earning grade will also earn a popcorn party!



## Valentine's Day Class Parties

It's that lovely time of year again! Valentine's Day is fast approaching and we are celebrating in class on Friday, February 14. We would like to remind our Griffins that we have a treat policy at our school. We discourage any sugar sweets but would love for students to bring in pretzels, fruit snacks, erasers, pencils, or any other healthy or useful treat for Valentine's Day. Feel free to be creative!

## Teacher Requests

Dear Parents,

If you would like to make a teacher request for the upcoming school year, please send these in no later than February 28 to [mkartchner@athlosutah.org](mailto:mkartchner@athlosutah.org). The administration will review requests as class lists are created for next year and make accommodations as needed. Please note that requests are not a guarantee of placement. Many factors are taken into account when placing students and administration does its best to find the best fit for your child.

Sincerely,

Mandy Kartchner



<b>Student Meal Prices</b> Breakfast: \$1.60   Reduced Breakfast: 30¢ Lunch: \$2.60   Reduced Lunch: 40¢		<b>Student Drink Prices</b> Milk: 30¢ Juice: 30¢ Water: 30¢		<b>ATHLOS ACADEMY OF UTAH</b> <b>FEBRUARY MENU</b>	
MONDAY	TUESDAY	WEDNESDAY	THURSDAY	FRIDAY	
<b>3</b> B: Pancakes or Cereal w/ Toast L: Teriyaki Chicken or Hot Ham & Cheese Sandwich	<b>4</b> B: Zucchini Bread or Cereal w/ Toast L: Beefy Nachos or Quesadilla	<b>5</b> B: Biscuit & Gravy or Cereal w/ Toast L: Hamburger or BBQ Pulled Pork Sandwich	<b>6</b> B: Croissant Sandwich or Cereal w/ Toast L: Orange Chicken or Italian Sub	<b>7</b> B: Breakfast Corndog or Cereal w/ Toast L: Pizza Rippers or Turkey Sandwich	
<b>10</b> B: Waffle Bites or Cereal w/ Toast L: S & S Chicken or Baked Potato w/ Ham & Cheese	<b>11</b> B: French Toast or Cereal w/ Toast L: Street Taco or Taco Soup w/ Chips	<b>12</b> B: Hot Oatmeal w/ Hash Brown or Cereal w/ Toast L: Athlos Sub Sandwich or Mandarin Salad	<b>13</b> B: Waffle Stackers or Cereal w/ Toast L: Chicken Cordon Bleu or Chicken Haystacks	<b>14</b> B: Yogurt Parfait or Cereal w/ Toast L: Rib-B-Q Sandwich or Turkey Sandwich	
<b>17</b> NO SCHOOL	<b>18</b> B: French Toast Sticks or Cereal w/ Toast L: Quesadilla or Chicken Fajita	<b>19</b> B: Cinnamon Roll or Cereal w/ Toast L: Philly Cheese Steak Sandwich or Beefy Mac	<b>20</b> B: Muffin or Cereal w/ Toast L: Waffle-N-Chicken Strips or PB&J	<b>21</b> B: Bagel w/ Hard Boiled Egg or Cereal w/ Toast L: Pizza or Turkey Sandwich	
<b>24</b> B: Pancakes or Cereal w/ Toast L: Orange Chicken or Italian Sub	<b>25</b> B: Banana Bread or Cereal L: Beefy Nachos or Soft Flour Taco	<b>26</b> B: Biscuit & gravy or Cereal L: Cheeseburger or Baked Potato w/ Ham & Cheese	<b>27</b> B: Coissant Sandwich or Cereal L: NEW Chicken Potato Bowl or Chicken Drum Stick Dinner	<b>28</b> B: Breakfast Corndog or Cereal L: Hot Dog or Turkey Sandwich	
<div>   <div>Will you be my Valentine?</div>   </div>					

\*Salad bar, fresh fruit, and milk offered daily. \*Menu items subject to change.



USDA is an equal opportunity provider



## Lunch Account Reminder

Parents, please pay close attention to your children's lunch accounts. We are having a lot of students with a negative balance. If you need help with breakfast and lunch meals, please fill out a Free & Reduced form to see if you qualify. You can fill this out at any time throughout the school year. The forms can be located on our website or at our front office. Thanks for your support with our lunch program.



# Athlos Academy Field Trips— Discovery outside the school walls

Athlos Academy is proud to provide outside experiences for our students. Field trips are an exciting and interactive way for students to engage and learn a particular study. Recently, our third-grade students visited the Clark Planetarium and discovered the science of space. They explored everything from the phases of our moon to the planets beyond.

Our students in seventh and eighth-grade choir also recently took a field trip down to the Beehive Senior Home. This field trip allowed students to experience the value of volunteering and put a smile on many faces in the Beehive Senior home. Athlos Academy would like to thank you for all your donations toward field trips. Field trips provide an opportunity for students to understand real-world learning and experience social-emotional growth.



## PTO ANNOUNCEMENTS

We Need YOU!

We are in the process of looking for next year's PTO Board. If you are interested in helping out, descriptions of positions and forms are on the school website under Parent Resources and PTO. Forms are due by March 13. All commitment levels are needed. More information is available by talking to a current PTO Board Member or emailing the PTO at [AAUTPTO@gmail.com](mailto:AAUTPTO@gmail.com).