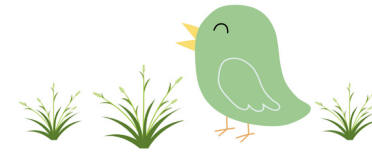


# April Menu



## DATES TO KNOW

Open Enrollment is  
Open for NEW Families for  
2024-25 School Year

April 3: Ballroom Dance Assembly

April 12: **No School**  
School Conferences

April 17: UVU Play Assembly  
Grades 3-9

April 19: PTO Carnival



Dates are subject to change. See  
calendar for more dates and  
details: Events Archive - *Athlos  
Academy of Utah* ([athlosutah.org](http://athlosutah.org))

Scan QR code with phone to be  
taken to School Calendar

### MONDAY

### TUESDAY

### WEDNESDAY

### THURSDAY

### FRIDAY

1 <b>B:</b> Breakfast Cookie w/ Yogurt <b>L:</b> Pulled Pork or PB & J	2 <b>B:</b> Cereal <b>L:</b> Soft Taco or PB & J	3 <b>B:</b> Breakfast Sandwich <b>L:</b> Chicken Alfredo or PB & J	4 <b>B:</b> Cinnamon Bites <b>L:</b> Quesadilla or PB & J	5 <b>B:</b> Pumpkin Bread <b>L:</b> Cheese Pizza, Pepperoni Pizza or PB & J
8 <b>B:</b> Fench Toast <b>L:</b> Orange Chicken or PB & J	9 <b>B:</b> Muffin <b>L:</b> Beefy Nachos or PB & J	10 <b>B:</b> Toast w/ Jelly <b>L:</b> Chicken Sandwich or PB & J	11 <b>B:</b> Waffle <b>L:</b> Grilled Cheese or PB & J	12 <b>No School</b> (School Conferences)
15 <b>B:</b> Yogurt Parfait <b>L:</b> Spaghetti & Meatballs or PB & J	16 <b>B:</b> Poptart <b>L:</b> Walking Tacos or PB & J	17 <b>B:</b> Goodie Ring <b>L:</b> Mac & Cheese or PB & J	18 <b>B:</b> Bagel Bites <b>L:</b> Chicken Nuggets or PB & J	19 <b>B:</b> Texas Toast <b>L:</b> Soft Pretzel or PB & J
22 <b>B:</b> Breakfast Cookie w/ Yogurt <b>L:</b> Chicken N Waffles or PB & J	23 <b>B:</b> Cereal <b>L:</b> Cheese Burger or PB & J	24 <b>B:</b> Breakfast Sandwich <b>L:</b> Corndog or PB & J	25 <b>B:</b> Cinnamon Bites <b>L:</b> Popcorn Chicken or PB & J	26 <b>B:</b> Pumpkin Bread <b>L:</b> Cheese Pizza, Pepperoni Pizza or PB & J
29 <b>B:</b> French Toast <b>L:</b> Cheesy Breadstick or PB & J	30 <b>B:</b> Muffin <b>L:</b> Chicken Drumstick Dinner or PB & J	1 <b>B:</b> Toast w/ Jelly <b>L:</b> Taquitos or PB & J	2 <b>B:</b> Waffle <b>L:</b> Baked Potato or PB & J	3 <b>B:</b> Croissant Sandwich <b>L:</b> Hot Dog or PB & J



### STUDENT MEAL AND DRINK PRICES

Breakfast: \$1.85 | Reduced Breakfast: 30c  
Lunch: \$2.85 | Reduced Lunch: 40c

Milk: 50c | Juice: 50c | Water: 50c

- Fruit and Veggies are served with every meal.
- This institution is an equal opportunity provider.
- Menu items are subject to change.

