

ATHLOS ACADEMY OF UTAH BOARD OF DIRECTORS MEETING

Date: September 19, 2018

Time: 6:30 PM

Location: 12309 South Mustang Trail Way, Herriman, UT 84096, Room 202

Board Member	Present/Absent
Bethany Zeyer	
Eric Christensen	
Josh Cummings	
Jeana Bonner	
Benjamin Hyink	
Gary Hansen	
Jake McCrea	
School Leader: Jeff Herr () Athlos HQ: Jeff Gunther () Charter Solutions: Alan Anderson (); Rich Eccles ()	

The meeting was called to order at _____

Topic	Discussion/Conclusion	Notes	Page #
Pledge of Allegiance (1 min)		Bethany Zeyer	
Approval of Meeting Minutes (1 min)	Approval of August 15 and September 4, 2018 Meeting Minutes	Bethany Zeyer	
Public Comments (5 min)	Opportunity for Public Comment	Bethany Zeyer	
Board Development			
Monthly Board Development (15 min)	Governance vs. Management	Jeff Gunther	
Committee Reports			
Director's Report (10 min)	Community Relations; Employee Updates; Facilities; Academics; Finance	Jeff Herr	
Athlos Report (5 min)	Athlos Supports and Project Updates	Jeff Gunther	
Finance Committee and	Receive July financial statements; Review August	Eric Christensen and Jeff Gunther	

Monthly Financial and Enrollment Reports * (15 min)	financial statements and enrollment update		
Discussion Items			
Student Performance (10 min)	Final SAGE Data	Jeff Gunther	
Special Education Transportation (5 mins)	Discuss options for transportation of special education student(s)	Jeff Gunther	
Policy Review Calendar (5 mins)	Review Governance Committee's Policy Review Calendar for 2018-2019	Governance Committee and Jeff Gunther	
School Facility Expenditure (5 mins)	Discussion regarding possible expenditure related to bike racks	Bethany Zeyer	
Board Goals (30 mins)	Discussion of board goals	Bethany Zeyer	
Action Items			
Early Literacy Plan (5 mins)	Approval of Early Literacy Plan	Jeff Herr	
Board Member Elections (5 mins)	Elections for board seats with expiring terms	Bethany Zeyer	
Board Officer Elections (5 mins)	Election of board officers	Bethany Zeyer	
Board Committee Appointments (5 mins)	Annual committee formation and appointments	Bethany Zeyer	
Closed Session	For the purposes of the discussion of the character, professional competence, or physical or mental health of an individual and for strategy sessions to discuss the purchase, exchange, or lease of real property		

Next Meeting: October 17, 2018

Adjournment:



Athlos Academy of Utah Board of Directors Meeting Minutes

Date: **15 August 2018**

Time: **6:00pm**

Location: **12309 South Mustang Way, Herriman, UT 84096, Room 202**

Attendance

***bold** indicates present*

- **Bethany Zeyer**
- **Josh Cummings**
- Rob Ninow
- **Jake McCrea**
- **Gary Hansen**
- **Ben Hyink**
- **Jeana Bonner**
- **Eric Christensen**

and also

Rick Eccles Alan Anderson, Jeff Gunther, and Jeffrey Herr

Standing Items

Called to Order: **6:05pm**

Pledge of Allegiance

Approval of Virtual Meeting: *N/A*

Motion to Approve of Meeting Minutes by Ben:

Seconded by: **Jeana** For: **7** Against: **0**

Public Comment

None

The board discussed the appropriate mechanism by which we could differentiate between Jeff Gunther and Jeff Herr. Bethany suggested Dr. Jeff for Jeff Gunther. Josh proposed Dr. J.

Jeff Herr explained that he hoped to do a Jeff One/Jeff Two costume with Jeff Gunther a la Cat in the Hat, which the board generally approved of.

Board Development

School Leader-Board Introductions

by Jeff Gunther

The board made introductions to the new director

Bethany gave her work, family, and volunteer background and the strengths that she brings to the board, namely she has a lot of connections within the city and she knows a lot of people in the city.

Josh followed, giving his family and work background, naming attention to detail and technology background as strengths.

Jeana followed, identifying her special education ties to the school and naming dependability and reliability as strengths.

Ben followed, giving his background, including his background as a teacher, and listing his strengths as having a love for the community and a desire to see the education level raised.

Jake followed, giving his background in accounting, listing his strengths as liking to help out and thinking out of the box.

Gary followed, giving his work and military service background, listing his strengths as being organized and dependable.

Eric followed, giving his work and family background, naming his strengths as policy and procedure review and being a good problem solver.

Jeff Herr thanked the board for the detail.

Committee Reports

Director's Report

by Jeff Herr

Community Relations. Jeff explained that he is spending a lot of time reaching out and reassuring parents and teachers about the transition to a new director. He explained that his main focus for the year will be academics, with a secondary priority being *owning* academics. He talked about how he is beginning to establish and evolve the culture.

Employee Updates. Hired Tamara Howard who comes with several years of experience coming to teach at the school and also has athletic strengths.

Facilities. Jeff explained that he's been working with "Dr. J" to review facilities readying it for bonding. Jeff also praised Julian for his efforts at managing the facility.

Bethany asked Alan about landscaping companies, for which we are currently under contract. Jeff explained that he is going to push for a pristine landscape for the start of school.

Jeff shared an idea about a school garden because it gives a chance for the kids to invest.

Jeff also shared a few enrollment and staff numbers.

Academics. Jeff explained his plans for how he would use data with the teachers for professional development.

Finance. Jeff reported on copier usage. He reported on training he gave to the teachers regarding reducing consumables in favor of technology.

Finally, Jeff reviewed how he planned to prepare a powerpoint for the board in ensuing meetings.

Athlos Report

by Jeff Gunther

Dr. Jeff reported to the board on Community Relations, Pillars, and Operations support over the last month. Specifically mentioned work on recruiting teachers, facilitating a re-registration event, helping prepare for PD, and helping Jeff get up to speed.

Bethany asked if Dr. Jeff would do a more detailed report on enrollment and recruitment next month.

Finance Committee and Monthly Financial and Enrollment Reports

by Eric Christensen and Jeff Gunther

Eric reported that our reported loss from last year is better than first thought. Also discussed the special education transportation expense.

Dr. Jeff then reported on enrollment. We currently are at 995 students enrolled if we include registrations returned (317) as well as returning students (678). Dr. Jeff explained that Dovetta is working hard to reach out for immunizations among other things to identify low engagement early on.

Dr. Jeff and Eric explained that they are going to target for 20 students per Kinder classroom, anticipating no-shows.

Bethany asked what we do in our offer letter to immediately engage the family. It is still a marketing process.

Eric asked a question about how to read the chart and how many offers can be extended.

Dr. Jeff talked about efforts being considered to bring in another section of Kindergarten, though noted that it is a little late in the game.

Josh asked a question about the no-show rate that Dr. Jeff stated earlier (10%), and he answered that it is closer to 6-8%. Also asked about possibly adjusting for known attribution and no-show rates, and Dr. Jeff explained that it would be good to do that next year after we have two years of data.

Bethany noted that there is a neighborhood across the street from Athlos who are slated to go to Silvercrest. Jeff explained that they are planning on doing a presentation for those families.

Dr. Jeff then transitioned to talk about the estimated loss for last year appears to be \$250k instead of \$280k due to better revenue outcomes and slightly work expense outcomes.

Governance Committee

by Josh Cummings

Josh asked the board to send him ideas for board training.

Discussion Items

Student Performance

by Jeff Gunther

Dr. Jeff explained that there is no new data to share yet as the state has not yet released final numbers.

SpED Transportation

by Jeff Herr

Jeff recommended that we table this discussion for the time being since the student in question will turn 9, which opens up some other options. Also explained, though, that the school is still looking at options for a reliable used van, targeting \$10-15k.

Alan explained that if we use SpED funds to buy it, then we can't use the van for anything other than SpED usage.

Jeana asked about the nature of the company that the student is transported to. Jeff wasn't sure, but supposes that it is in Utah County and is probably a private company.

Food Service Fund Balance

by Jeff Gunther

Dr. Jeff explained some of the fundamentals of managing the food fund balance. Because we have 79 days worth of fund balance of the allowed 90 days, the school is coming up with a plan to use some of that balance.

Some of the ideas are some indirect expenses that the school can charge to the food service account like the physical space in the building.

Another option is to bring down prices, though we are limited by the federal government on how much we can bring them down.

Jake asked how long it took us to get to the fund balance that high, and Alan explained that it was 2 years to get here. Alan also explained that lunch prices, according to federal guidelines, may need to go up by a dime. He also added detail on what percentage of indirect costs can be attributed to the fund balance.

Bethany asked about any action that the board needs to take. Dr. Jeff explained that there is no action to take, yet.

Josh asked about the possibility of using funds to put in the school garden. Dr. Jeff explained that might be tricky to justify coding that as the school might not be able to incorporate the garden food into the lunch program itself.

CSP Grant Expenditures

by Jeff Gunther and Alan Anderson

Alan educated the board on the start-up grant and that some funds remain in order to provide a security system. There are about \$90k left in the start-up grant with possibly \$15k to be spent on security cameras. Alan hasn't yet bid out the alarm system.

Bethany and Eric asked questions about quality and layout plans.

Gary asked about gun safety. Alan and Dr. Jeff explained that currently, that there is access control both into the school and into the student area by fob and visitor badge.

Gary asked about training with the teachers, and Jeff and Alan explained the kinds of training including lockdown drills and fire drills.

Ben asked about connectivity for the security system, and Alan explained that we have 1GB service.

Board Officer Roles

by Bethany Zeyer

Bethany asked for a couple of changes to Board Officer definitions. Specifically, she talked about the role of the Vice Chair and the idea of changing the Vice Chair to the Chair-Elect. She gave her reasoning including that she, as a chair, could have used some mentoring when she entered the role.

Board Meeting Times

by Bethany Zeyer and Jeff Gunther

The board discussed some options for changing the time including changing the time to 6:30 and moving to a different night.

The board resolved to change the time to 6:30, but keep the day on Wednesday.

Action Items

School Leader Endorsement

by Bethany Zeyer

Bethany welcomed Jeff. Eric and Josh also gave their support.

Motion to endorse Jeff Herr as school leader for Athlos Academy of Utah by **Josh**: Seconded: **Josh** For: **8** (Rob arrived at this point) Against: **0**

Board Committee Appointments

by Bethany Zeyer

Josh raised a concern about the order of operations of joining committees before we make officer appointments.

Dr. Jeff recommended that we consider which committee appointments we are interested in so that we are ready for next month.

Bethany explained that we will have five committees this year, adding Safety to the already existing 4.

A question was asked about parent engagement on the committees, and Dr. Jeff explained that FACE is a good fit for that.

Eric raised a question about the effectiveness of the FACE committee. Jeff explained a bit of his vision for this committee and thinking about it as a bit of a marketing committee.

The board discussed how to find people who can engage with the FACE committee. Jeff recommended that this committee be focused on upbeat, community outreach type efforts.

The board each individually expressed their interest in various committees. Eric shared that he liked Governance, and that he would prefer not to continue on the Finance committee as his wife manages his finances for him. Josh shared that he preferred

Academics. Jeana, FACE. Ben, Academics. Jake, Safety and Finances. Gary, Safety and Finances. Bethany, Safety.

Motion to Postpone Committee selections until Sept. board meeting by Eric:

Seconded: **Jake** For: **8** Against: **0**

The board discussed family handbook revisions. Noted that the school calendar is incorrect. Bethany asked for an addition on page 16. Josh asked for a clarification on page 19.

Motion to Accept Family Handbook Pending Changes by Eric:

Seconded: **Gary** For: **7** Against: **1**

The board discussed the merits of each candidate attorney, specifically Lisa Arbogast, Joel Wright, and Joan Andrews.

Motion to Recommend Kirton-McConkie as Legal Counsel for Athlos Academy of Utah for the 2018-19 School Year by Rob:

Seconded: **Jake** For: **8** Against: **0**

Gary asked a question of how to change the budget. Alan explained that it would be taken care of in the revised budget.

Motion to adjourn @ 8:32pm: **Eric** Seconded: **Josh** For: **8** Against: **0**

Community Relations Support:

- The community relations team has been facilitating on-going recruitment efforts, including generating a list of exited middle school students to attempt to reach back out to.
- Tabitha has been working to recruit teachers as uncertain enrollment resulted in uncertain needs for teachers.
- The community relations team launched an updated AAU website.

Pillars Support:

- The Pillars team was on-site to support professional development in August.
- Darin has been working with Jeff H. on preparing new annual school goals aligned to the new charter school performance framework.
- The Pillars team provided input on the school's scheduling and programming in order to ensure that the schedule was meeting the needs of each of the three Pillars.
- Darin has worked with Jeff H. to refine and refocus the role of the instructional coaches in order to more directly support teacher development.
- Allison and Darin supported the school in its response to a special education complaint.

Operations Support:

- Our student information systems administrator has been working with the front office staff to manage enrollments as students enroll and drop throughout the first few weeks.
- Our school operations specialist has been working to set up an absence and substitute management system for AAU.
- Our student information systems administrator is preparing for the October 1 count and ensuring that all data is accurate in Powerschool.
- The school operations team has been supporting the school in ensuring that all beginning of year tests are prepared to be delivered.
- The education leadership team at Athlos-Boise has worked on generating five-year budget projections based on current enrollment trends.

Athlos Academy of Utah
Balance Sheet- CS Board Report
07/01/2018 to 07/31/2018

Assets	
Cash	
Operating cash	
Checking	1,241,664
Savings	5
Cash on Hand	200
Total Operating cash	<u>1,241,869</u>
Total Cash	<u>1,241,869</u>
Accounts receivable	
Local	5,564
Sales tax receivable	406
Total Accounts receivable	<u>5,970</u>
Total Assets	<u>1,247,839</u>

Athlos Academy of Utah
Balance Sheet- CS Board Report
07/01/2018 to 07/31/2018

Liabilities and fund balance	
Liabilities	
Accounts payable	
Accounts payable	125,516
Payroll and benefits payable	132,908
P-Card liabilities	-
Total Accounts payable	<u>258,424</u>
Other current liabilities	
Accrued salaries and wages	(804)
Accrued withholdings	216
Total Other current liabilities	<u>(588)</u>
Total Liabilities	<u>257,836</u>
Fund balance	
Beginning fund balance	715,418
Net income	274,585
Total Fund balance	<u>990,003</u>
Total Liabilities and fund balance	<u>1,247,839</u>

Athlos Academy of Utah
Income Statement- CS Board Report
07/01/2018 to 07/31/2018
8.33% of the fiscal year has expired

	<u>Actual</u> <u>YTD</u>	<u>Annual</u> <u>Budget</u>	<u>\$</u> <u>Over (Und)</u> <u>YTD</u>	<u>%</u> <u>of Budget</u> <u>YTD</u>	<u>Current</u> <u>Month</u>	<u>Prior</u> <u>Month</u>	<u>2 Months</u> <u>Prior</u>
Net Income (Loss)							
Revenue							
002 Local Revenue							
006 Lunch Fee Student	138	157,000	(156,862)	0.09%	138	2,008	13,963
007 Lunch Fee Non Student	-	3,000	(3,000)	-	-	144	339
009 Activities - After School Program	-	12,550	(12,550)	-	-	-	-
010 Student Fees - School Programs	-	1,000	(1,000)	-	-	-	-
013 Local Donations	-	29,800	(29,800)	-	-	197	3,068
017 Other Local Income	-	11,465	(11,465)	-	-	2,950	4,206
Total 002 Local Revenue	138	214,815	(214,677)	0.06%	138	5,299	21,576

Athlos Academy of Utah
Income Statement- CS Board Report
07/01/2018 to 07/31/2018
8.33% of the fiscal year has expired

	Actual YTD	Annual Budget	\$ Over (Und) YTD	% of Budget YTD	Current Month	Prior Month	2 Months Prior
021 State Revenue							
022 Regular School Programs K-12	225,935	2,859,744	(2,633,809)	7.90%	225,935	202,296	281,049
023 Professional Staff	11,907	150,717	(138,810)	7.90%	11,907	9,177	9,177
024 Flexible Allocation	7,220	77,804	(70,584)	9.28%	7,220	729	893
025 Educator Salary Adjustment	21,152	216,919	(195,767)	9.75%	21,152	21,152	21,152
026 Class Size Reduction K-8	21,941	263,295	(241,354)	8.33%	21,941	20,231	20,231
027 Charter School Administration	7,292	100,000	(92,708)	7.29%	7,292	7,038	7,038
028 Charter- Local Replacement	163,115	2,237,000	(2,073,885)	7.29%	163,115	153,418	153,418
029 Special Ed Add-on	28,603	343,238	(314,635)	8.33%	28,603	27,895	27,895
030 Special Ed Self-Contained	1,248	14,972	(13,724)	8.34%	1,248	2,380	2,380
031 Special Ed Extended/State	(2,236)	18,155	(20,391)	-12.32%	(2,236)	4,110	833
033 Gifted and Talented Learning	-	3,192	(3,192)	-	-	308	384
034 Enhancement for At-Risk	-	41,920	(41,920)	-	-	581	581
036 Reading Improvement Program	-	23,584	(23,584)	-	-	2,052	2,577
040 School LAND Trust Program	93,430	92,860	570	100.61%	93,430	-	-
042 Lunch-State Liquor Tax	-	40,000	(40,000)	-	-	20,199	4,499
045 Library Books & Electronic Reso	85	844	(759)	10.07%	85	75	75
046 Teachers Materials & Supplies	6,540	7,000	(460)	93.43%	6,540	-	-
047 Other State Revenue	-	24,073	(24,073)	-	-	-	-
Total 021 State Revenue	586,232	6,515,317	(5,929,085)	9.00%	586,232	471,641	532,182

Athlos Academy of Utah
Income Statement- CS Board Report
07/01/2018 to 07/31/2018
8.33% of the fiscal year has expired

	Actual YTD	Annual Budget	\$ Over (Und) YTD	% of Budget YTD	Current Month	Prior Month	2 Months Prior
071 Federal Revenue							
072 IDEA B- Disabled	40	120,660	(120,620)	0.03%	40	136,219	-
074 National School Lunch Program	-	25,000	(25,000)	-	-	3,488	2,561
075 Free & Reduced Lunch	-	52,000	(52,000)	-	-	7,461	5,655
077 Breakfast Reimbursement	-	13,000	(13,000)	-	-	1,640	1,285
079 Title I Disadvantaged	-	17,552	(17,552)	-	-	31	-
080 Title II Teacher Improvement	-	7,747	(7,747)	-	-	7,632	274
Total 071 Federal Revenue	40	235,959	(235,919)	0.02%	40	156,471	9,775
Total Revenue	586,410	6,966,091	(6,379,681)	8.42%	586,410	633,411	563,533

Athlos Academy of Utah
Income Statement- CS Board Report
07/01/2018 to 07/31/2018
8.33% of the fiscal year has expired

	Actual YTD	Annual Budget	\$ Over (Und) YTD	% of Budget YTD	Current Month	Prior Month	2 Months Prior
Expense							
102 Salaries 100							
103 Wages-Principals & Directors	6,673	83,754	(77,081)	7.97%	6,673	6,673	6,673
104 Wages-Instructional Support	206	173,979	(173,773)	0.12%	206	3,096	19,833
105 Wages-Teachers	(568)	2,050,037	(2,050,605)	-0.03%	(568)	(2,618)	218,539
106 Wages-Teachers-Special Ed	167	273,233	(273,066)	0.06%	167	7,442	28,665
107 Wages-Substitute Teacher	-	60,000	(60,000)	-	-	919	8,936
108 Wages-Support Services Student	-	55,000	(55,000)	-	-	1,996	5,925
109 Wages-Admin Support Staff	10,589	125,158	(114,569)	8.46%	10,589	11,589	10,589
110 Wages-Aides & Paraprofessional	-	11,000	(11,000)	-	-	30	1,131
111 Wages-SpEd Aide & Paraprofess	1,197	70,064	(68,867)	1.71%	1,197	1,602	7,015
113 Wages-Admin MAINT & OPS	3,167	39,140	(35,973)	8.09%	3,167	3,167	3,167
115 Wages-Food Services	-	122,267	(122,267)	-	-	1,553	13,767
Total 102 Salaries 100	21,431	3,063,632	(3,042,201)	0.70%	21,431	35,449	324,240
121 Benefits 200							
122 Retirement Programs	79	40,666	(40,587)	0.19%	79	7,685	3,748
123 Social Security & Medicare Tax	1,028	234,051	(233,023)	0.44%	1,028	32,400	17,261
124 Health Benefits	21,053	300,000	(278,947)	7.02%	21,053	23,802	23,011
125 Unemployment W/C Insurance	789	36,900	(36,111)	2.14%	789	749	760
Total 121 Benefits 200	22,949	611,617	(588,668)	3.75%	22,949	64,636	44,780

Athlos Academy of Utah
Income Statement- CS Board Report
07/01/2018 to 07/31/2018
8.33% of the fiscal year has expired

	Actual YTD	Annual Budget	\$ Over (Und) YTD	% of Budget YTD	Current Month	Prior Month	2 Months Prior
131 Purchased Prof & Tech Services							
132 Management & Business Service	792	9,500	(8,708)	8.34%	792	772	772
133 Instructional Services	2,500	11,500	(9,000)	21.74%	2,500	-	-
134 Employee Training & Developme	-	1,500	(1,500)	-	-	-	-
135 Education Support Services	3,219	20,600	(17,381)	15.63%	3,219	1,203	2,342
136 Administrative Support Services	-	843,000	(843,000)	-	-	51,323	53,780
137 Computer and Tech Services	2,520	35,200	(32,680)	7.16%	2,520	2,400	2,400
138 Legal and Accounting	-	9,500	(9,500)	-	-	-	-
139 Purchased Tech Services	8,804	7,500	1,304	117.39%	8,804	36	108
Total 131 Purchased Prof & Tech Se	17,835	938,300	(920,465)	1.90%	17,835	55,734	59,402
151 Purchased Property Services 4							
152 Utilities Expenses	3,928	28,500	(24,572)	13.78%	3,928	4,098	1,705
153 Repair & Maint- Comp & Tech	-	16,000	(16,000)	-	-	-	-
154 Repair & Maint- Facilities	4,110	85,000	(80,890)	4.84%	4,110	15,047	7,016
156 Lease- Rent Expense	129,485	1,584,636	(1,455,151)	8.17%	129,485	(1,389,881)	131,223
Total 151 Purchased Property Servi	137,523	1,714,136	(1,576,613)	8.02%	137,523	(1,370,736)	139,944
171 Other Purchased Services 500							
172 Transportation Services	-	-	-	-	-	1,063	2,552
173 Insurance Expense	-	25,776	(25,776)	-	-	485	2,883
174 Telephone & Internet	2,309	18,120	(15,811)	12.74%	2,309	1,509	1,509
176 Postage & Mailing Expense	-	1,900	(1,900)	-	-	211	40
178 Copy and Print Services	-	250	(250)	-	-	-	-
179 Advertising- Administration	-	400	(400)	-	-	32	125
180 Travel- Staff Travel & Mileage	-	16,092	(16,092)	-	-	2,206	220
181 Travel- Field Trips	-	4,000	(4,000)	-	-	-	370
Total 171 Other Purchased Services	2,309	66,538	(64,229)	3.47%	2,309	5,506	7,699

Athlos Academy of Utah
Income Statement- CS Board Report
07/01/2018 to 07/31/2018
8.33% of the fiscal year has expired

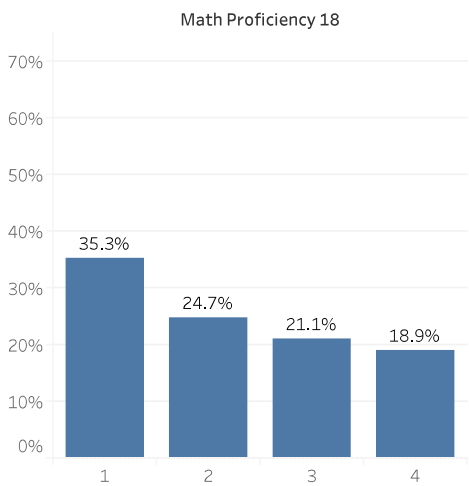
	Actual YTD	Annual Budget	\$ Over (Und) YTD	% of Budget YTD	Current Month	Prior Month	2 Months Prior
191 Supplies 600							
192 Classroom	760	57,000	(56,240)	1.33%	760	1,176	(1,049)
193 Employee Motivation	-	3,500	(3,500)	-	-	999	365
194 Employee Training Supplies	-	250	(250)	-	-	-	-
195 Special Ed	-	12,000	(12,000)	-	-	305	229
196 Administration Supplies	577	20,350	(19,773)	2.84%	577	693	1,634
199 Lunch Program Supplies	-	121,100	(121,100)	-	-	(222)	12,114
200 Maintenance & Custodial Supplie	-	28,000	(28,000)	-	-	208	3,230
202 Energy-Electricity & Natural Gas	6,751	98,500	(91,749)	6.85%	6,751	6,514	5,645
203 Textbooks & Instructional Softw	84,731	135,000	(50,269)	62.76%	84,731	27,527	12,838
205 Computer and Tech Supplies	16,959	25,500	(8,541)	66.51%	16,959	393	527
206 Motor Fuel & Oil	-	100	(100)	-	-	-	-
208 Student Program Supplies	-	4,831	(4,831)	-	-	-	-
209 Student Motivation Supplies	-	3,000	(3,000)	-	-	130	716
210 Fund Raising Supplies	-	750	(750)	-	-	-	-
Total 191 Supplies 600	109,778	509,881	(400,103)	21.53%	109,778	37,723	36,249
241 Other Objects 800							
242 Dues and Fees	-	8,000	(8,000)	-	-	1,804	276
243 Interest Paid- Loans	-	-	-	-	-	1,519,827	-
Total 241 Other Objects 800	-	8,000	(8,000)	-	-	1,521,631	276
Total Expense	311,825	6,912,104	(6,600,279)	4.51%	311,825	349,943	612,590
Total Net Income (Loss)	274,585	53,987	220,598	508.61%	274,585	283,468	(49,057)

AAU 2018-2019 Enrollment Tracker										
13-Sep	K	1	2	3	4	5	6	7	8	Total
Total Grade Capacity:	160	140	140	135	135	135	135	56	35	1071
Returning Students:	2	90	101	92	100	96	98	37	28	644
Total Grade Capacity After Returning:	158	50	39	43	35	39	37	19	7	427
Waitlist:	0	0	0	0	0	0	0	0	0	0
Offers Out:	43	0	0	0	0	0	0	0	0	43
Accepts Offer & Gives Consent for Records:	153	36	23	28	14	27	23	11	2	317
Registered:	147	36	23	27	14	26	23	11	1	308
Total	149	126	124	119	114	122	121	48	29	952
<u>Possible Total:</u>	198	126	124	120	114	123	121	48	30	1004

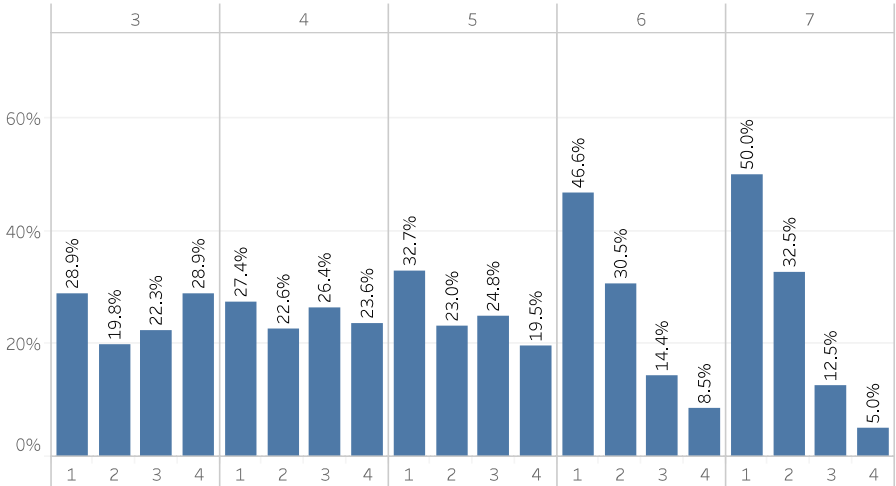
2017-18 SAGE Summary

Math	ELA	Science	Comparisons
------	-----	---------	-------------

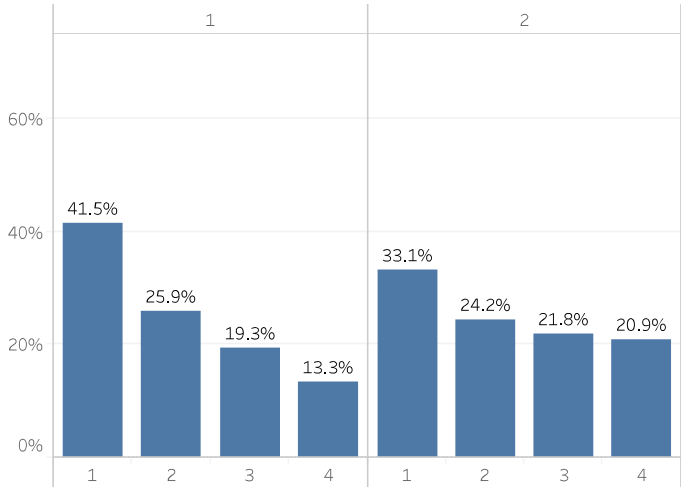
Math Proficiency



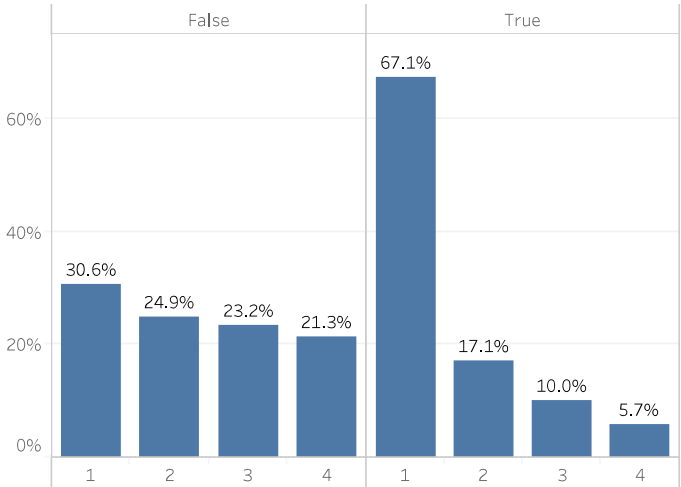
Math Proficiency by Grade



Math Proficiency by Years at Athlos



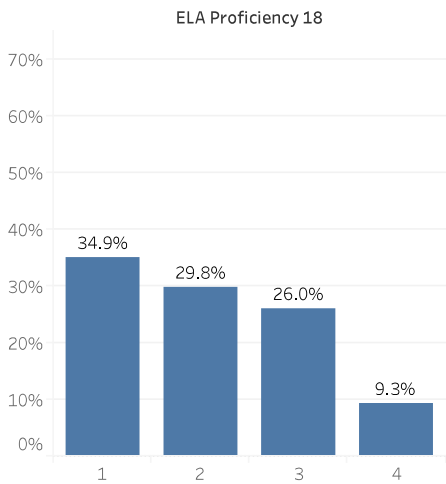
Math Proficiency by Sped



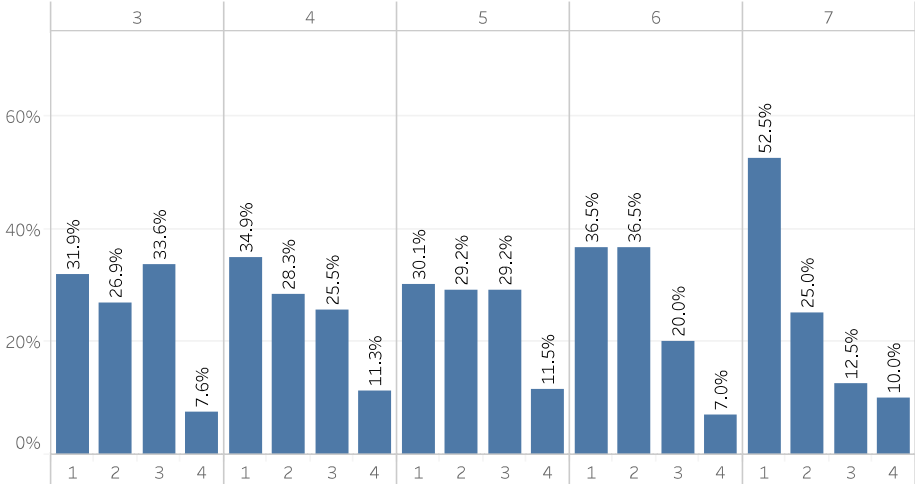
2017-18 SAGE Summary

Math	ELA	Science	Comparisons
------	-----	---------	-------------

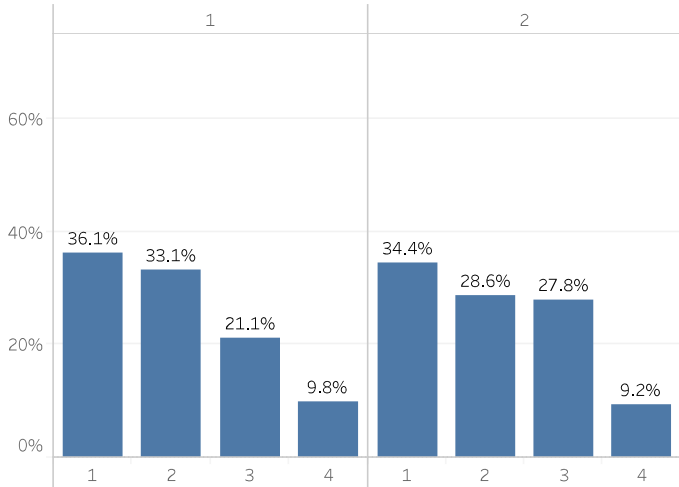
ELA Proficiency



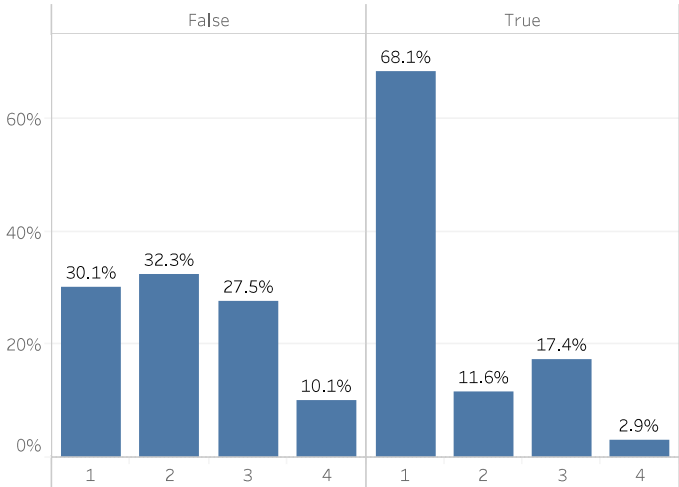
ELA Proficiency by Grade



ELA Proficiency by Years at Athlos



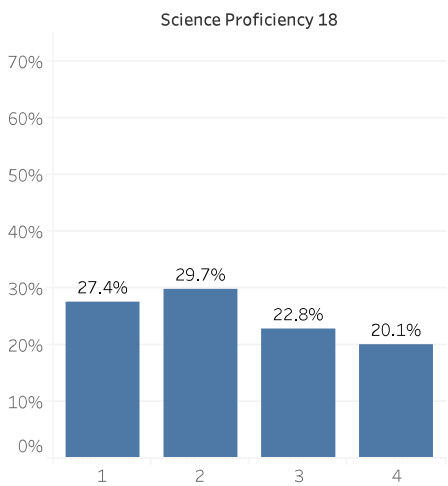
ELA Proficiency by Sped



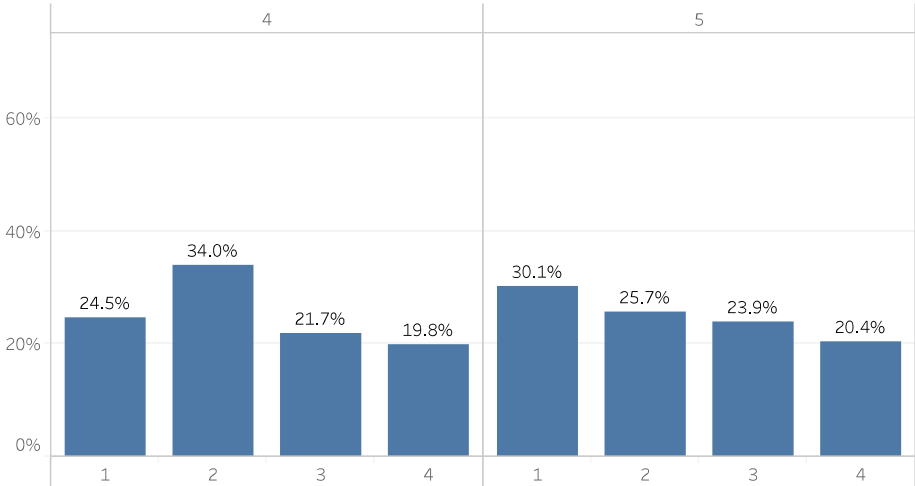
2017-18 SAGE Summary

Math	ELA	Science	Comparisons
------	-----	---------	-------------

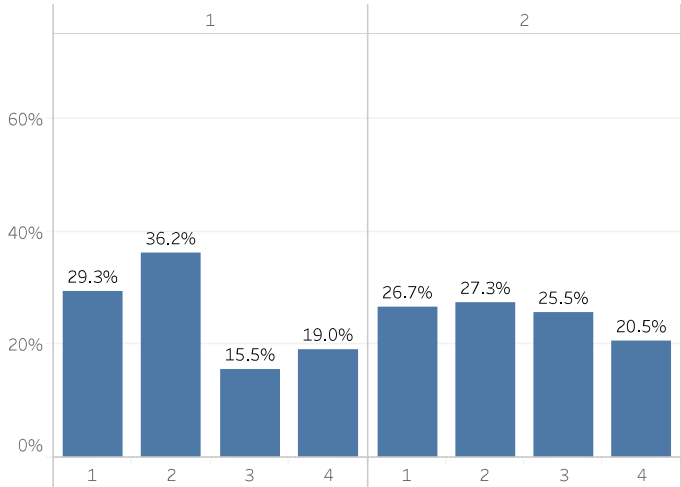
Science Proficiency



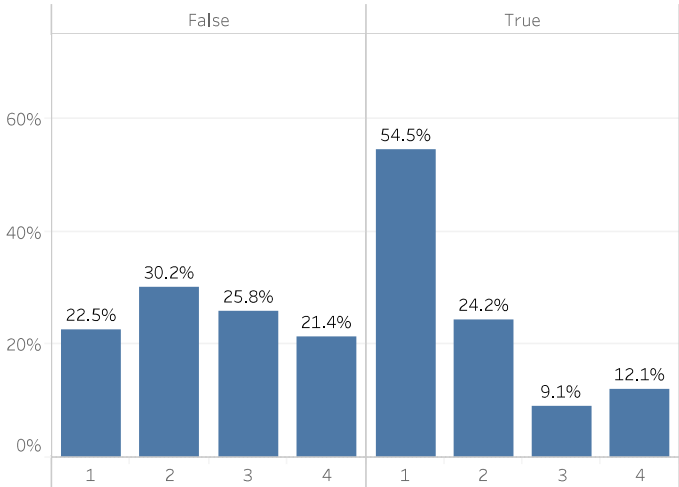
Science Proficiency by Grade



Science Proficiency by Years at Athlos



Science Proficiency by Sped



Transfer Report for Schools Authorized by the State Charter School Board

(Students who transferred out of the school during the school year)

Charter School	2012	2013	2014	2015	2016	2017	2018	Met 2018	5-year Average
								Annual Indicator	
Academy for Math Engineering & Science	4.7%	4.3%	4.1%	3.6%	4.9%	3.7%	2.1%	Yes	3.7%
<i>Alianza Academy - Closed</i>	17.0%	14.2%	13.5%	15.0%					
American Academy of Innovation						18.0%	17.1%	Yes	
American International School of Utah				16.1%	12.6%	10.0%	7.7%	Yes	
American Leadership Academy	7.8%	8.5%	6.4%	6.4%	5.5%	4.6%	5.6%	Yes	5.7%
American Preparatory Academy	3.1%	1.9%	4.5%	5.5%	3.5%	4.3%	3.7%	Yes	4.3%
American Preparatory Academy - Accelerated School	8.8%	8.9%	5.2%	5.6%	3.6%	4.5%	5.9%	Yes	5.0%
American Preparatory Academy - Draper #2			3.0%	2.7%	3.2%	3.8%	6.3%	Yes	3.8%
American Preparatory Academy - Draper #3				8.6%	8.2%	5.4%	8.6%	Yes	
American Preparatory Academy - Salem	10.1%	7.0%	8.8%	7.9%	8.8%	9.9%	5.5%	Yes	8.2%
American Preparatory Academy - The School for New Americans	11.1%	6.1%	2.5%	1.7%	3.9%	2.0%	6.1%	No	3.2%
<i>Aristotle - Closed</i>		29.5%	28.0%	14.5%	19.8%	23.8%			
Ascent Academies of Utah Farmington				7.3%	3.8%	4.6%	6.7%	Yes	
Ascent Academies of Utah Lehi					9.8%	6.0%	5.3%	Yes	
Ascent Academies of Utah West Jordan				3.5%	4.4%	2.4%	3.4%	Yes	
Athenian eAcademy					25.8%	27.1%	21.4%	No	
Athlos Academy of Utah						9.3%	4.7%	Yes	
Bear River Charter School	3.2%	1.9%	2.6%	1.3%	2.0%	6.3%	2.0%	Yes	2.8%
Beehive Science & Technology Academy	10.3%	10.2%	13.2%	7.4%	12.0%	7.1%	8.2%	Yes	9.6%
Bonneville Academy							9.1%	Yes	
C.S. Lewis Academy	12.1%	8.7%	7.1%	11.5%	10.3%	10.9%	8.7%	Yes	9.7%
Canyon Grove Academy	25.9%	45.5%	20.5%	23.0%	19.5%	21.1%	19.8%	Yes	20.8%
Canyon Rim Academy	0.9%	0.4%	1.6%	0.4%	0.4%	1.6%	1.8%	Yes	1.2%
Channing Hall	2.4%	2.2%	2.4%	2.3%	4.4%	3.1%	2.5%	Yes	2.9%
City Academy	12.0%	18.9%	12.5%	21.3%	19.3%	12.7%	18.6%	No	16.9%
Davinci Academy	8.1%	15.1%	7.8%	10.2%	7.6%	7.9%	6.7%	Yes	8.0%
Dixie Montessori Academy				11.3%	15.7%	15.7%	15.3%	Yes	
Dual Immersion Academy	11.2%	8.6%	12.7%	7.4%	11.1%	10.6%	7.7%	Yes	9.9%
Early Light Academy at Daybreak	0.6%	2.8%	1.6%	1.8%	1.2%	3.8%	1.8%	Yes	2.0%
East Hollywood High	10.7%	17.1%	22.1%	26.7%	21.6%	27.5%	20.8%	No	23.7%
Endeavor Hall	4.7%	7.6%	8.1%	8.5%	8.0%	11.3%	11.7%	Yes	9.5%
Entheos Academy	3.8%	2.9%	2.3%	1.9%	2.5%	5.5%	1.9%	Yes	2.8%
Entheos Academy Magna		9.0%	6.1%	8.3%	8.9%	7.3%	6.7%	Yes	7.5%
Esperanza School				19.4%	7.9%	8.4%	5.7%	Yes	
Excelsior Academy	9.1%	5.0%	6.6%	6.2%	3.6%	3.1%	2.7%	Yes	4.4%
Franklin Discovery Academy						47.8%	13.9%	Yes	
Freedom Preparatory Academy	2.9%	4.5%	4.7%	5.1%	5.3%	6.2%	7.4%	Yes	5.7%
Freedom Preparatory Academy - Vineyard						9.2%	4.0%	Yes	
Gateway Preparatory Academy	10.2%	10.8%	9.5%	9.4%	8.9%	6.3%	7.7%	Yes	8.4%
George Washington Academy	5.4%	4.2%	5.0%	6.0%	4.9%	5.7%	4.9%	Yes	5.3%
Good Foundations Academy	8.5%	9.9%	5.9%	7.9%	8.5%	8.4%	9.4%	Yes	8.0%
Greenwood Charter School					14.1%	14.5%	10.8%	Yes	
Guadalupe School	3.1%	12.6%	10.5%	5.4%	9.1%	7.5%	5.4%	Yes	7.6%
Hawthorn Academy	1.9%	2.7%	2.3%	3.3%	2.5%	5.2%	2.4%	Yes	3.1%
Hawthorn Academy South Jordan					8.5%	13.1%	5.5%	Yes	
Highmark Charter School		8.1%	5.1%	4.9%	3.4%	5.1%	6.4%	Yes	5.0%
Itineris Early College High	4.4%	4.7%	6.5%	6.3%	9.2%	6.6%	10.7%	No	7.9%
Jefferson Academy	5.6%	7.1%	10.6%	5.8%	4.2%	5.0%	5.9%	Yes	6.3%
John Hancock Charter School	1.8%	4.8%	1.8%	2.4%	1.2%	5.4%	3.5%	Yes	2.9%
<i>Kairos Academy - Closed</i>				58.6%	37.4%	44.5%			

Charter School								Met 2018	5-year
	2012	2013	2014	2015	2016	2017	2018	Annual Indicator	
Karl G. Maeser Preparatory Academy	6.5%	9.4%	4.2%	4.0%	2.8%	4.4%	3.8%	Yes	3.8%
Lakeview Academy	3.9%	5.0%	5.7%	4.4%	3.8%	2.6%	2.5%	Yes	3.8%
Leadership Academy of Utah							12.9%	Yes	
Leadership Learning Academy			9.3%	9.3%	7.7%	6.2%	6.5%	Yes	7.8%
Leadership Learning Academy - Ogden							21.3%	No	
Legacy Preparatory Academy	5.6%	5.2%	5.2%	3.6%	4.0%	4.1%	2.6%	Yes	3.9%
Lincoln Academy	2.4%	4.1%	5.1%	3.4%	4.7%	2.8%	3.3%	Yes	3.9%
Lumen Scholar Institute					13.1%	18.3%	16.0%	Yes	
Mana Academy Charter School			13.4%	20.5%	16.1%	11.5%	16.3%	No	15.6%
Maria Montessori Academy	6.8%	6.4%	5.9%	6.6%	5.4%	7.1%	6.2%	Yes	6.2%
Merit College Preparatory Academy	7.8%	12.1%	5.9%	2.5%	10.4%	9.3%	13.5%	No	8.3%
Moab Charter School	13.4%	5.4%	2.0%	13.6%	1.9%	4.4%	10.1%	No	6.4%
Monticello Academy	4.5%	3.6%	2.3%	2.2%	3.6%	6.5%	6.4%	Yes	4.2%
Mountain Heights Academy	21.8%	25.5%	21.7%	19.2%	17.0%	18.7%	20.0%	No	19.3%
Mountain West Montessori Academy				8.4%	6.3%	8.5%	4.8%	Yes	
Mountainville Academy	4.5%	4.9%	3.9%	3.7%	5.2%	5.6%	5.4%	Yes	4.8%
Navigator Pointe Academy	0.6%	1.5%	3.0%	2.0%	2.2%	1.7%	1.6%	Yes	2.1%
No. UT. Acad. for Math Engineering & Science	4.4%	5.3%	4.1%	4.9%	5.5%	4.4%	2.4%	Yes	4.2%
Noah Webster Academy	3.8%	7.1%	5.1%	6.8%	4.9%	5.0%	4.4%	Yes	5.2%
North Davis Preparatory Academy	5.2%	4.1%	5.1%	5.5%	4.2%	4.6%	3.8%	Yes	4.6%
North Star Academy	0.9%	1.9%	1.0%	1.9%	1.4%	2.8%	2.1%	Yes	1.9%
Odyssey Charter School	7.7%	7.5%	4.8%	5.7%	7.4%	7.2%	5.1%	Yes	6.1%
Ogden Preparatory Academy	6.5%	4.5%	3.7%	4.2%	3.9%	2.9%	4.2%	Yes	3.8%
Pacific Heritage Academy		36.7%	16.5%	15.4%	19.7%	13.2%	12.5%	Yes	15.5%
Paradigm High School	5.6%	10.2%	6.8%	8.7%	6.3%	6.9%	9.1%	Yes	7.6%
Pinnacle Canyon Academy	7.8%	9.9%	11.4%	11.6%	8.2%	8.0%	8.6%	Yes	9.5%
Pioneer High School for the Performing Arts - Closed		15.2%	21.1%	23.8%	15.5%	11.3%	18.9%	No	18.1%
Promontory School of Expeditionary Learning		3.6%	3.1%	1.0%	2.9%	3.8%	5.3%	Yes	3.2%
Providence Hall	2.2%	1.6%	3.2%	4.7%	3.8%	4.0%	4.7%	Yes	4.1%
Quest Academy	8.7%	3.3%	5.6%	5.1%	4.4%	5.9%	4.0%	Yes	5.0%
Ranches Academy	4.8%	5.7%	3.1%	3.7%	1.3%	5.2%	4.6%	Yes	3.6%
Reagan Academy	1.7%	1.7%	2.5%	2.8%	2.0%	3.7%	2.3%	Yes	2.7%
Renaissance Academy	5.6%	4.7%	4.6%	4.3%	5.8%	5.6%	3.8%	Yes	4.8%
Rockwell Charter High School	13.0%	10.3%	10.3%	10.7%	8.8%	8.5%	9.5%	Yes	9.5%
Roots Charter High School					21.1%	25.4%	25.5%	No	
Salt Lake Arts Academy	2.3%	1.0%	1.8%	1.0%	2.8%	4.4%	3.7%	Yes	2.7%
Scholar Academy				9.3%	3.3%	2.7%	5.1%	Yes	
Soldier Hollow Charter School	5.6%	10.0%	7.9%	8.4%	7.7%	6.4%	9.5%	Yes	8.0%
Spectrum Academy	8.5%	4.3%	7.2%	5.6%	5.6%	6.4%	6.3%	Yes	6.2%
Spectrum Academy - Pleasant Grove				17.2%	9.8%	3.6%	5.6%	Yes	
St. George Academy							19.1%	Yes	
Summit Academy	1.1%	0.6%	1.4%	2.4%	2.3%	3.6%	2.9%	Yes	2.5%
Summit Academy - Bluffdale						9.8%	7.2%	Yes	
Summit Academy - Independence				10.6%	4.0%	5.9%	4.3%	Yes	
Summit Academy High School	9.7%	9.6%	11.9%	8.3%	12.4%	11.2%	10.9%	Yes	10.9%
Syracuse Arts Academy	3.0%	2.7%	4.4%	1.7%	4.2%	5.2%	3.2%	Yes	3.7%
Syracuse Arts Academy - North					3.3%	2.9%	3.3%	Yes	
Terra Academy					14.0%	5.0%	6.2%	Yes	
The Center for Creativity, Innovation and Discovery							8.9%	Yes	
Thomas Edison	8.3%	3.6%	3.3%	3.5%	3.9%	2.5%	5.2%	Yes	3.7%
Thomas Edison - South	8.9%	3.7%	5.8%	6.1%	4.4%	5.3%	4.2%	Yes	5.2%
Timpanogos Academy	1.5%	1.3%	4.1%	3.2%	3.0%	2.4%	3.8%	Yes	3.3%

Charter School	2012	2013	2014	2015	2016	2017	2018	Met 2018	5-year
								Annual Indicator	
Treeside Charter School							19.8%	Yes	
Tuacahn High School for the Performing Arts	7.6%	8.2%	11.7%	9.3%	9.9%	6.3%	13.6%	No	10.2%
Uintah River High	25.4%	32.4%	6.9%	24.3%	18.6%	17.1%	16.3%	Yes	16.6%
Utah Connections Academy	30.4%	29.0%	33.7%	25.8%	26.0%	24.8%	23.7%	No	26.8%
Utah County Academy of Science	2.9%	1.8%	3.3%	3.1%	1.8%	2.5%	2.0%	Yes	2.5%
Utah Military Academy				19.2%	16.3%	15.2%	16.7%	Yes	
Utah Military Academy - Camp Williams							24.1%	No	
Utah Virtual Academy	27.7%	18.2%	16.8%	30.5%	26.4%	26.4%	22.3%	No	24.5%
Valley Academy		11.9%	12.8%	10.1%	15.0%	6.9%	12.4%	No	11.4%
Vanguard Academy					3.3%	1.3%	0.5%	Yes	
Venture Academy	2.3%	7.6%	5.2%	6.7%	5.3%	5.2%	3.7%	Yes	5.2%
Vista at Entrada School of Performing Arts and Technology	9.1%	9.3%	5.4%	5.4%	6.5%	5.5%	6.2%	Yes	5.8%
Voyage Academy			6.1%	3.3%	2.2%	2.6%	1.1%	Yes	3.0%
Walden School of Liberal Arts	9.2%	8.1%	7.6%	6.9%	7.6%	5.7%	4.9%	Yes	6.5%
Wallace Stegner Academy						12.1%	9.5%	Yes	
<i>Wasatch Institute of Technology - Closed</i>				53.7%					
Wasatch Peak Academy	1.9%	1.8%	1.4%	1.6%	2.4%	2.1%	4.4%	Yes	2.4%
Wasatch Waldorf Charter School						15.8%	10.8%	Yes	
Weilenmann School of Discovery	3.1%	6.3%	5.0%	4.1%	2.9%	2.8%	3.3%	Yes	3.6%
Winter Sports School*				7.4%	0.9%	6.9%	0.0%	Yes	
Average of All SCSB Schools	7.4%	8.6%	7.4%	9.0%	8.0%	8.6%	8.0%		

*Despite that Winter Sports School has a non-traditional school year, the transfer rate is calculated using the traditional school year.

Definitions

TRANSFER RATE: The percentage of students who leave the school during the year to go to another private or public school in the state, to go to homeschool, or who dropped out. Excluded are non-residents, students whose school of record is another school, students who attended the school for less than 10 days, and students in kindergarten.

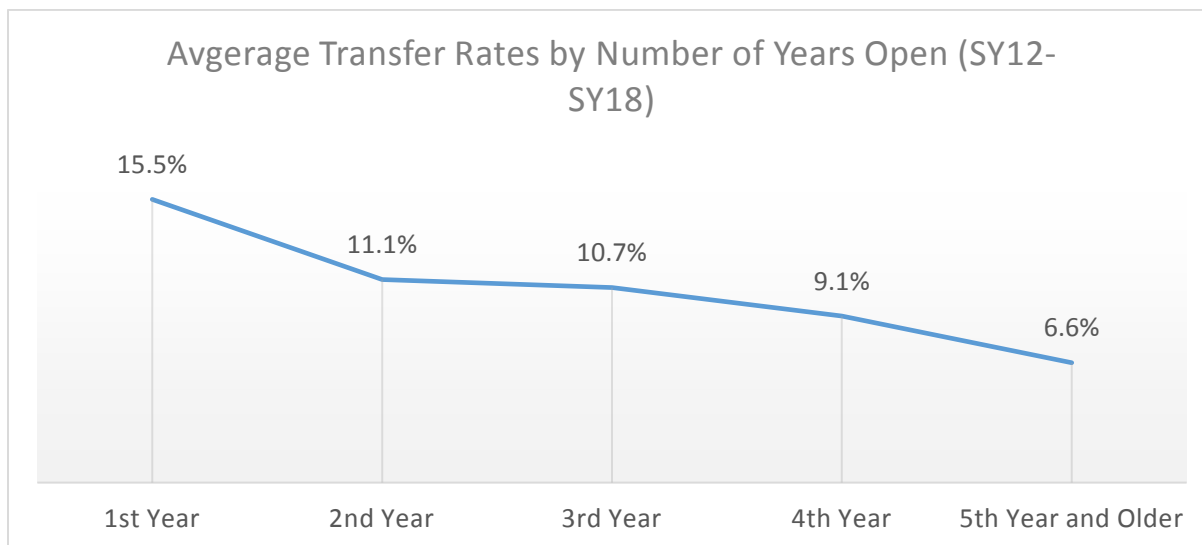
ANNUAL INDICATOR: The SCSB conducts further research and review on schools whose transfer rate is 20% or higher or who had at least a 4% increase from the prior year.

COMPREHENSIVE REVIEW INDICATOR: Generally happens every five years, where it is expected that the 5-year average transfer rate be no more than 12%.

Note: Not meeting either indicator triggers further review, and does not necessarily mean there is a concern.

Analysis

- The average transfer rate for charter schools decreased (improved) from 2017 to 2018, though the overall transfer rates since 2012 have remained fairly consistent, around 8%, with some fluctuation from year to year.
- 101 (86%) charter schools met the annual CSAF transfer rate indicator target. 88% had a 5-year average transfer rate below or equal to 12%.
- 60% of charter schools improved their transfer rate percentage from the previous year.
- First-year schools tend to have higher transfer rates, but this does not necessarily indicate concern. Transfer rates tend to improve in the second year and beyond.



The following schools' transfer rates improved the most in 2018:

- Franklin Discovery Academy (second-year school)
- Hawthorn Academy South Jordan (third-year school)
- Winter Sports School (forth-year school)
- East Hollywood High (open more than 5 years)
- Athenian eAcademy (third-year school)
- Freedom Preparatory Academy- Vineyard (second-year school)
- Wasatch Waldorf Charter School (second-year school)
- Athlos Academy of Utah (second-year school)
- American Preparatory Academy – Salem (changed via the Voluntary School Improvement Process)
- Bear River Charter School (open more than 5 years)

The following schools had 2018 transfer rates below 3%:

- Winter Sports School (0.0%)
- Vanguard Academy (0.5%)
- Voyage Academy (1.1%)
- Navigator Pointe Academy (1.6%)
- Early Light Academy at Daybreak (1.8%)
- Canyon Rim Academy (1.8%)
- Entheos Academy - Kearns (1.9%)
- Utah County Academy of Science (2.0%)
- Bear River Charter School (2.0%)
- Academy for Math Engineering & Science (2.1%)
- North Star Academy (2.1%)
- Reagan Academy (2.3%)
- No. UT. Acad. for Math Engineering & Science (2.4%)
- Hawthorn Academy (2.4%)
- Channing Hall (2.5%)
- Lakeview Academy (2.5%)
- Legacy Preparatory Academy (2.6%)
- Excelsior Academy (2.7%)
- Summit Academy Draper (2.9%)

LEA_Name	LEA Type	Typical or Better Pathway Percent*	Met UGG*
Alpine District	District	74.11%	Yes
Beaver District	District	92.14%	Yes
Box Elder District	District	80.83%	Yes
Cache District	District	83.32%	Yes
Canyons District	District	65.14%	Yes
Carbon District	District	68.98%	Yes
Daggett District	District	80.27%	Yes
Davis District	District	75.32%	Yes
Duchesne District	District	86.90%	Yes
Emery District	District	92.01%	Yes
Garfield District	District	86.89%	Yes
Grand District	District	78.16%	Yes
Granite District	District	70.55%	Yes
Iron District	District	79.04%	Yes
Jordan District	District	70.38%	Yes
Juab District	District	81.59%	Yes
Kane District	District	87.55%	Yes
Logan City District	District	79.03%	Yes
Millard District	District	86.30%	Yes
Morgan District	District	82.98%	Yes
Murray District	District	78.66%	Yes
Nebo District	District	72.46%	Yes
North Sanpete District	District	81.40%	Yes
North Summit District	District	83.57%	Yes
Ogden City District	District	67.25%	Yes
Park City District	District	73.39%	Yes
Piute District	District	100.00%	Yes
Provo District	District	77.53%	Yes
Rich District	District	94.60%	Yes
Salt Lake District	District	62.77%	Yes
San Juan District	District	74.55%	Yes
Sevier District	District	80.67%	Yes
South Sanpete District	District	89.44%	Yes
South Summit District	District	85.85%	Yes
Tintic District	District	96.71%	Yes
Tooele District	District	72.74%	Yes
Uintah District	District	TBD	
Wasatch District	District	74.79%	Yes
Washington District	District	70.80%	Yes
Wayne District	District	96.88%	Yes
Weber District	District	73.04%	Yes

The Uniform Growth Goal (UGG) is 47.83% of third grade FAY students making typical or better progress.

*A 95% confidence interval is calculated to account for many LEAs having small n sizes.

LEA_Name	LEA Type	Typical or Better Pathway Percent*	Met UGG*
American International School of Utah	Charter	46.05%	No
American Leadership Academy	Charter	65.74%	Yes
American Preparatory Academy (APA)	Charter	TBD	
Ascent Academies of Utah	Charter	81.03%	Yes
Athenian eAcademy	Charter	37.11%	No
Athlos Academy of Utah	Charter	83.51%	Yes
Bear River Charter School	Charter	96.30%	Yes
Bonneville Academy	Charter	72.54%	Yes
C.S. Lewis Academy	Charter	52.73%	Yes
Canyon Grove Academy	Charter	57.98%	Yes
Canyon Rim Academy	Charter	83.40%	Yes
Channing Hall	Charter	89.27%	Yes
DaVinci Academy	Charter	82.65%	Yes
Dixie Montessori Academy	Charter	78.80%	Yes
Dual Immersion Academy	Charter	54.05%	Yes
Early Light Academy at Daybreak	Charter	83.25%	Yes
Edith Bowen Laboratory School	Charter	81.00%	Yes
Endeavor Hall	Charter	63.41%	Yes
Entheos Academy	Charter	69.46%	Yes
Esperanza School	Charter	60.22%	Yes
Excelsior Academy	Charter	60.25%	Yes
Franklin Discovery Academy	Charter	52.28%	Yes
Freedom Preparatory Academy	Charter	76.62%	Yes
Gateway Preparatory Academy	Charter	88.40%	Yes
George Washington Academy	Charter	93.24%	Yes
Good Foundations Academy	Charter	72.14%	Yes
Greenwood Charter School	Charter	68.79%	Yes
Guadalupe School	Charter	88.20%	Yes
Hawthorn Academy	Charter	70.87%	Yes
Highmark Charter School	Charter	75.44%	Yes
Jefferson Academy	Charter	88.39%	Yes
John Hancock Charter School	Charter	76.29%	Yes
Lakeview Academy	Charter	85.23%	Yes
Leadership Learning Academy	Charter	48.10%	Yes
Legacy Preparatory Academy	Charter	69.99%	Yes
Lincoln Academy	Charter	82.92%	Yes
Lumen Scholar Institute	Charter	69.80%	Yes

LEA_Name	LEA Type	Typical or Better Pathway Percent*	Met UGG*
Mana Academy Charter School	Charter	88.96%	Yes
Maria Montessori Academy	Charter	67.57%	Yes
Moab Charter School	Charter	91.01%	Yes
Monticello Academy	Charter	87.73%	Yes
Mountain West Montessori Academy	Charter	65.72%	Yes
Mountainville Academy	Charter	92.84%	Yes
Navigator Pointe Academy	Charter	75.12%	Yes
Noah Webster Academy	Charter	89.12%	Yes
North Davis Preparatory Academy	Charter	54.03%	Yes
North Star Academy	Charter	95.84%	Yes
Odyssey Charter School	Charter	73.68%	Yes
Ogden Preparatory Academy	Charter	85.66%	Yes
Open Classroom	Charter	69.45%	Yes
Pacific Heritage Academy	Charter	57.37%	Yes
Pinnacle Canyon Academy	Charter	84.93%	Yes
Promontory School of Expeditionary Learning	Charter	85.11%	Yes
Providence Hall	Charter	83.93%	Yes
Quest Academy	Charter	68.81%	Yes
Ranches Academy	Charter	77.89%	Yes
Reagan Academy	Charter	74.66%	Yes
Renaissance Academy	Charter	72.28%	Yes
Scholar Academy	Charter	77.21%	Yes
Soldier Hollow Charter School	Charter	85.90%	Yes
Spectrum Academy	Charter	95.56%	Yes
Summit Academy	Charter	61.52%	Yes
Syracuse Arts Academy	Charter	61.68%	Yes
Terra Academy	Charter	71.49%	Yes
The Center for Creativity, Innovation and Discovery	Charter	51.39%	Yes
Thomas Edison	Charter	69.33%	Yes
Timpanogos Academy	Charter	82.43%	Yes
Treeside Charter School	Charter	52.63%	Yes
Utah Connections Academy	Charter	50.38%	Yes
Utah Virtual Academy	Charter	63.80%	Yes
Valley Academy	Charter	73.47%	Yes
Venture Academy	Charter	85.63%	Yes
Vista at Entrada School of Performing Arts and Technology	Charter	61.25%	Yes
Voyage Academy	Charter	79.97%	Yes

LEA_Name	LEA Type	Typical or Better Pathway Percent*	Met UGG*
Walden School of Liberal Arts	Charter	80.48%	Yes
Wallace Stegner Academy	Charter	66.62%	Yes
Wasatch Peak Academy	Charter	87.16%	Yes
Wasatch Waldorf Charter School	Charter	70.77%	Yes
Weilenmann School of Discovery	Charter	81.12%	Yes
Charters Total (Excluding APA)	Charter	68.56%	
Districts Total (Excluding Uintah District)	District	72.35%	
State Total (Excluding APA and Uintah)		71.90%	

The Uniform Growth Goal (UGG) is 47.83% of students making typical or better progress.

**A 95% confidence interval is calculated to account for many LEAs having small n sizes.*

School Year: 2018-2019

Year in Policy Review Cycle (1-3): 3

Policy to Review	Committee Responsible	Stakeholders Invited	Dates of Review		
			Committee	Board Discussion	Board Action
2003 – Bylaws	Governance		October	November	January
2004 – Code of Ethics	Governance		October	November	January
2005 – Conflict of Interest Policy	Governance		October	November	January
4001 – Approval for Fieldwork	Governance	School Leader	November	January	February
4002 – Background Checks	Governance	School Leader	December	January	February
4003 – Child Neglect Reporting	Governance	School Leader	April	May	June
4004 – Employee Records	Governance	School Leader	April	May	June
4005 – Confidentiality Regarding Juvenile Offenders	Governance	School Leader	April	May	June
4006 – Education Association Leave	Governance	School Leader	April	May	June
4007 – Educational Services Outside of School	Governance	School Leader	April	May	June
4008 – Employee Accident Reporting	Governance	School Leader	October	November	January
4009 – Employee Communications Policy	Governance	School Leader	October	November	January
4010 – Employee Dress Code	Governance	School Leader	October	November	January
4011 – Employee Evaluations Policy	Governance	School Leader	May	June	July

4012 – Employee Harassment	Governance	School Leader	November	January	February
4013 – Employee Use of Keys and Security	Governance	School Leader	January	February	March
4014 – Employee Use of Social Media	Governance	School Leader	November	January	February
4015 – Employment of Intern Teachers	Governance	School Leader	November	January	February
4016 – Employment of Relatives	Governance	School Leader	November	January	February
4017 – Employment Policies for Non-Licensed Employees	Governance	School Leader	November	January	February
4018 – Equal Employment Opportunity	Governance	School Leader	March	April	May
4019 – Family and Medical Leave	Governance, Finance	School Leader	January	February	March
4021 – Hiring Substitute Teachers	Governance	School Leader	February	March	April
4022 – Prohibiting Discrimination	Governance	School Leader	February	March	April
4023 – Reporting of Employee Arrests	Governance	School Leader	February	March	April
4024 – Safety Expectations for Employees	Governance	School Leader	February	March	April
4026 – Drug-Free Workplace	Governance	School Leader	February	March	April
4027 – Substitute Teachers’ Evaluations	Governance	School Leader	March	April	May
4028 – Teaching Licensure	Governance	School Leader	January	February	March
4029 – Ten Teaching Standards	Governance	School Leader	March	April	May
4030 – Whistleblower Protection Policy	Governance	School Leader	March	April	May
4038 – Employee Leave	Governance, Finance	School Leader	January	February	March

4039 – Volunteers	Governance, FACE	School Leader	January	February	March
Teacher Evaluation Plan	Governance, Academics	School Leader	May	June	July
Employee Handbook	Governance, Finance	School Leader	June	July	August

Early Literacy Plan Template

Describe core instruction in grades K-3 in the following areas:

Core Area	Duration	Frequency	Grades	Evidence-based Curriculum/Strategies
Phonological Awareness	10 min. 10 min. As needed	5x week 5x week As needed	Kinder 1st 2-3	Wonders, whole group, small group, strategic partners
Phonics	10 min 20 min 30 min	5x week 5x week 2-3 x week	Kinder 1st 2-3	Wonders, whole group, small group, strategic partners
Fluency	5 min. 20 min. 20 min	2-3x week 5x week 5x week	Kinder 1 st 2-3	Wonders, whole group, small group, strategic partners
Vocabulary	10 min. 10 min. 30 min.	5x week 5x week 2-3x week	Kinder 1st 2-3	Wonders, whole group, small group, strategic partners
Comprehension	15 min. 30 min. 30 min.	5x week 5x week 5x week	Kinder 1 st 2-3	Wonders, whole group, small group, strategic partners
Oral Language	5-10 min. 5-10 min. 5-10 min	2-3x week 2-3x week 2-3x week	Kinder 1 st 2-3	Wonders, whole group, small group, strategic partners
Writing	20 min. 45-60 min. 45-60 min.	5x week 5x week 5x week	Kinder 1 st 2-3	Wonders, whole group, small group, strategic partners

2. Describe the assessments used for core instruction and intervention to make instructional decisions and ensure interventions are aligned to students' diagnostic needs.

We will be using Dibels progress monitoring (green/blue every 4 weeks, yellow every other week, red weekly). In addition to Dibels each grade level will have lesson quick checks, weekly assessments and end of unit assessments that align with the Wonders program.
Wonder works has daily corrective feedback and weekly assessments.

3. Describe the tiered, evidence-based intervention system available to students struggling to read proficiently.

We will be using small group instruction as well as the tiered intervention that is built into the lessons in Wonders. Wonder Works for our tiered intervention system as well as the tiered system built into Wonders core instruction.

- 4. Describe the professional learning opportunities that will be provided using these funds for K-3 teachers, literacy coaches, and interventionists. *These funds cannot be used for faculty or staff in grades 4-6.***

An onsite trainer will provide professional development on August 16th on the Wonders program and how to use it. Wonders has professional development videos embedded in the program that will allow for point of need professional development. We will have in house individualized professional development periodically throughout the year on literacy best practices as well as how to use the curriculum correctly and consistently.

Local Goals

Requirements per 53F-2-503: Goals must be measurable, address current performance gaps in student literacy data, and include specific strategies for improving outcomes, including early intervention K-3 software if being used.

Goal 1 *(required)*

By May 31st 2019, Athlos Academy of Utah leadership and staff will increase the percentage of kindergarten and 1st grade students who score at Below Benchmark (yellow) on the DIBELS composite by 5%. We will do this by implementing the Wonders curriculum with fidelity. Teachers will also attend a weekly data dive facilitated to check in on progress and provide specific evidence-based interventions. These students will also receive 45 minutes a week of support in addition to Tier I instruction.

Goal 2 *(required)*

By May 31st, 2019, Athlos Academy of Utah leadership and staff will maintain or increase the percentage of 2nd grade students on the DIBELS DORF accuracy by implementing evidence based programs like Wonders, EL, Phonics4reading, and Words their Way. Teachers will also attend a

weekly data dive facilitated to check in on progress and provide specific evidence based interventions. These students will also receive 45 minutes a week of support in addition to Tier I instruction.

Goal 3 (optional)

Goal 4 (optional)

General Assurances: *Check all the boxes below.*

- ☐ The plan submitted has been reviewed and approved by your local school board in a public meeting.
- ☐ We understand our state growth goal is to achieve at least 60% of students in grades 1-3 making typical or better progress on DIBELS Next.
- ☐ We understand that we will submit our end of year data and report progress for our local goals by June 30 annually.
- ☐ We understand that if our plan is not approved by December 15th, we forego our Early Literacy Program funds.
- ☐ Early Literacy Program funds shall only be used for early literacy interventions and supports in kindergarten through grade 3 that have proven to significantly increase the percentage of students who are proficient in literacy (*see 53F-2-503 for details*).
- ☐ We understand that if program money is used in a manner that is inconsistent with 53F-2-503, our LEA is liable for reimbursement for the amount of funds improperly used.

By submitting this form, I certify the information I provided on and in connection to this application is true, accurate and complete. I also understand that any false statements on this application I file with the Utah State Board of Education may be grounds for disqualification for Early Literacy Program funds.